

# GROUPS – NEW FUNCTION THAT WILL SECURE YOUR DATA

The GROUP MODE prevents from data download from foreign loggers, which can accidentally appear in the range of your base station in the field. In big projects it helps to reprogramme loggers and better data manage.

Connect the base station to the USB port.

Launch Tracker and choose the COM port.

Check which groups are already supported - go into *GROUP MODE*

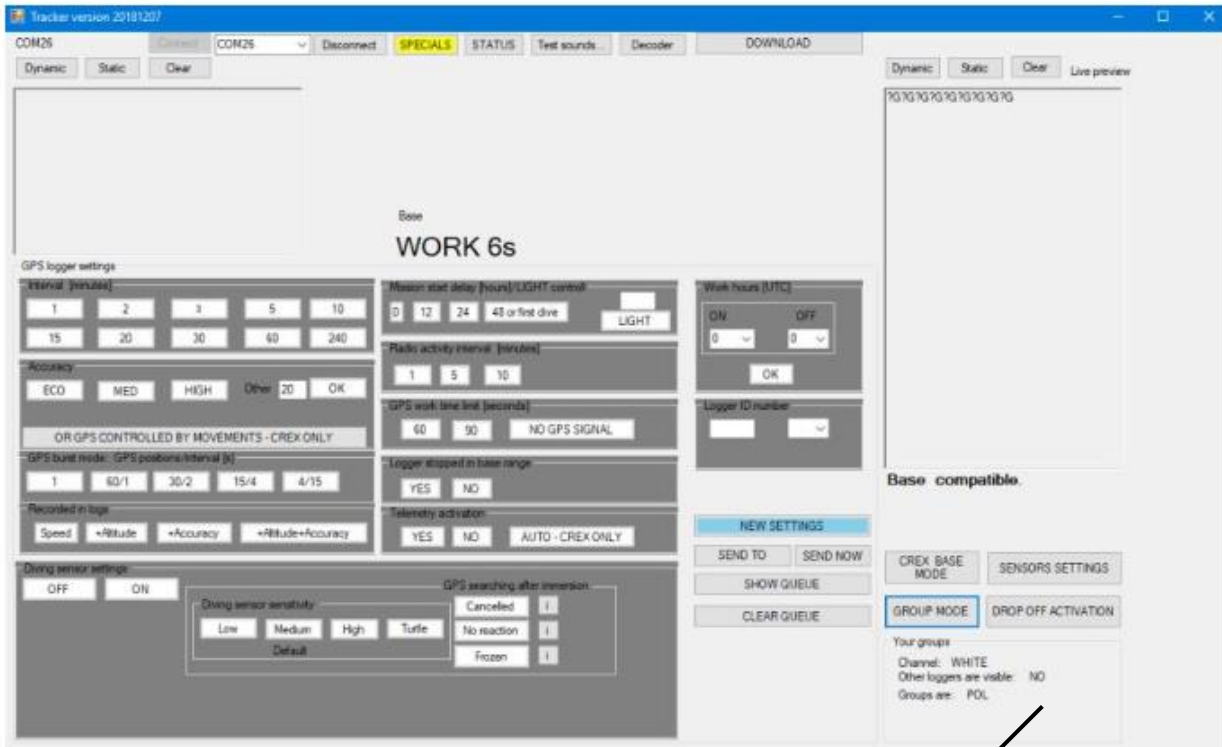
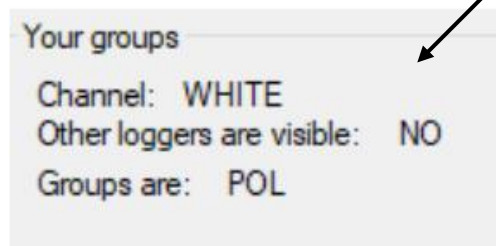


Figure 1 – Base working in GROUP MODE



**?G** – base station with GROUPS (downloads data only from loggers belonging to GROUPS).

**?** – base station without GROUPS (downloads data from all loggers).

**?R** – during renaming logger base station “sees” **all** loggers and downloads their data.

**Empty window** (live preview) – check *Figure 7*.

Write or modify names in the text boxes. Use only CAPITAL letters.

Change additional options if needed. Typical selection: *Other loggers visible* = NO, *Radio channel* = WHITE.

DON'T change the radio channel – the default is WHITE. The other channels in loggers can be set up on demand, but during production only. When you did not ask for such modification, your loggers will use WHITE channel.

Write name/names of your loggers like URI, PIC, ALL etc. Names are written on the loggers labels:

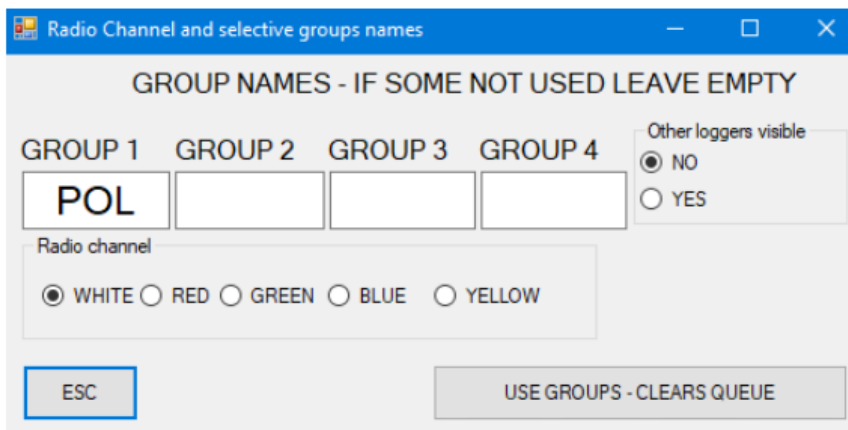


Figure 2 – Name of the GROUPS

**Options:**

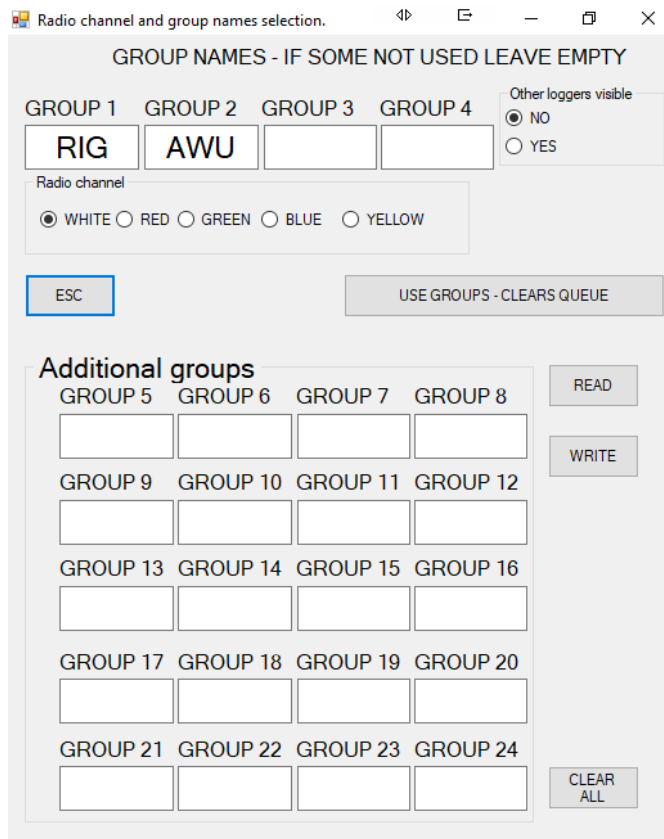
**NO** – base doesn't 'see' other loggers than **POL** and downloads data only from loggers named **POL**

**YES** – base station 'sees' other loggers, shows their names and voltage, but still doesn't download their data.

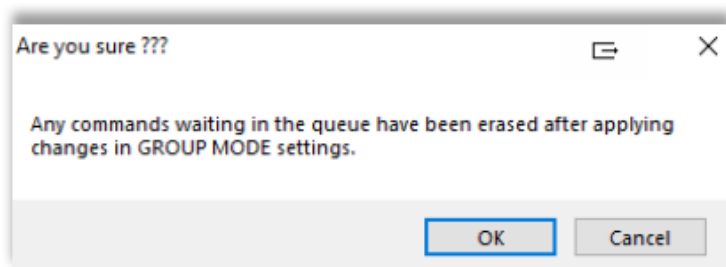
To confirm your group - choose button **USE GROUPS-CLEAR QUEUE** (visible on the picture above)

In new Tracker, released in March 2021 and compatible base station, it is possible to set more GROUPS than four. If needed, write GROUP names in *Additional groups* section and press *Write* and to exit press *USE GROUPS – CLEAR QUEUE*. Be sure that at least one group name was written in one of four main GROUPS boxes.

Extended GROUP MODE window in Tracker from March 2021:



When *Additional groups* have been not used, to save settings just press *USE GROUPS – CLEAR QUEUE* and accept the warning message:



To remove GROUPS enter **EKO** in each window:

Only after fourfold entering **EKO** - button **GROUP MODE OFF** will appear – please use it.

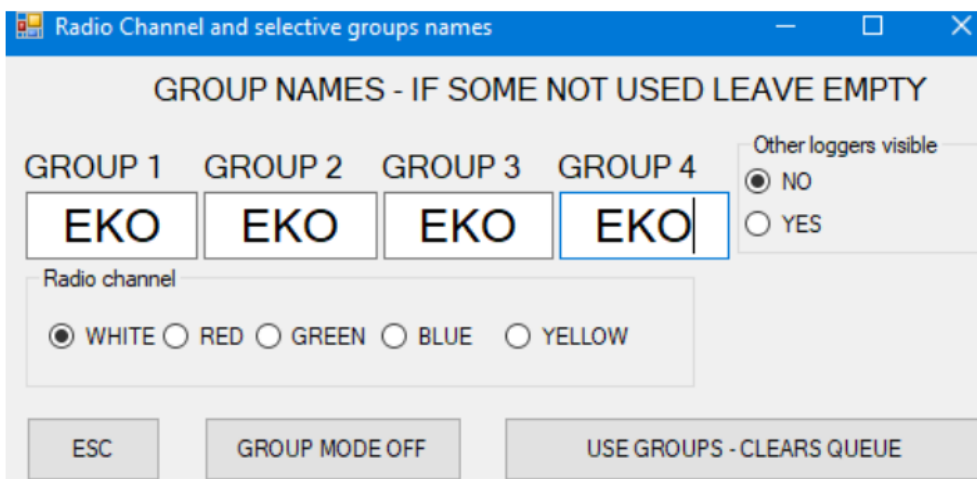


Figure 3. Turning off GROUPS

After that action button **GROUP MODE OFF** will appear:

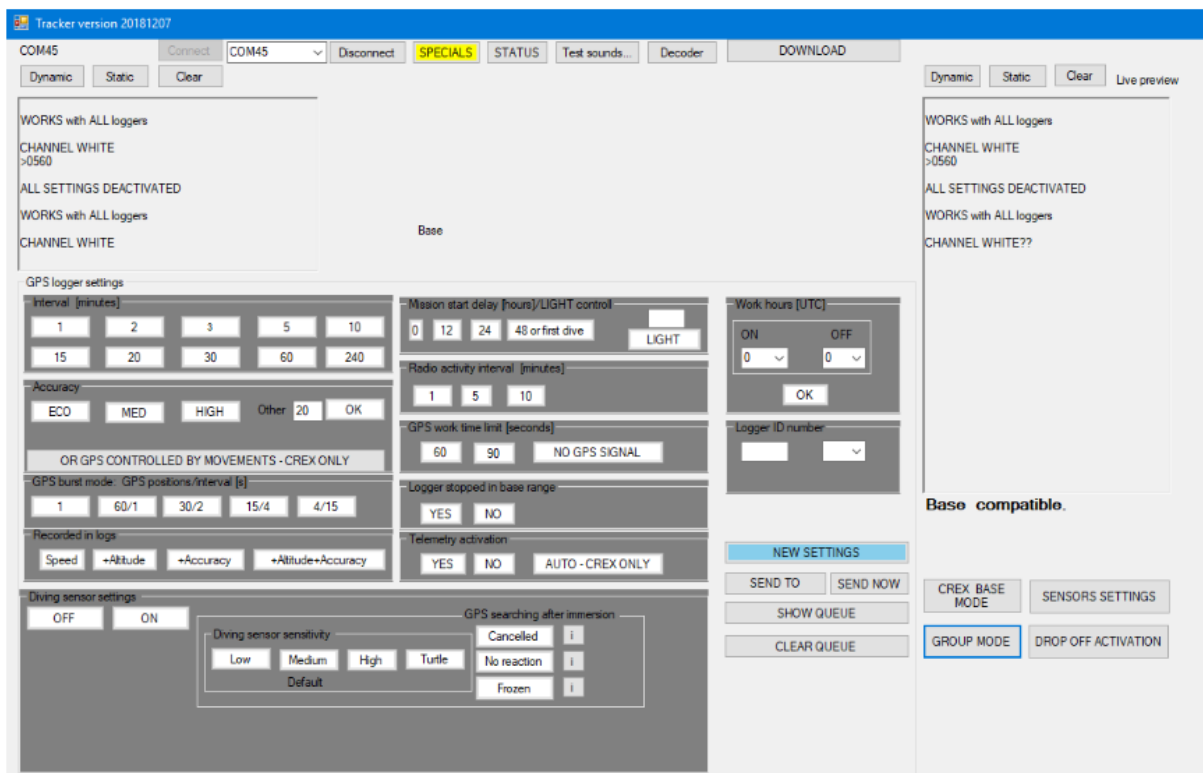


Figure 4. Window informing that GROUPS have been turned off – base station “sees” all loggers

## NOTE

In case you don't know the names of your loggers, input any name in **GROUP MODE** menu and accept. Your loggers will be visible but will be not able to download commands or upload data, but it is enough to check the names and complete the **GROUP MODE**.



So far your base station worked without GROUP MODE, but with the newest software – GROUPS have to be used. Therefore if you plug in base station (without groups) to your computer, in LIVE PREVIEW only empty window will be seen.

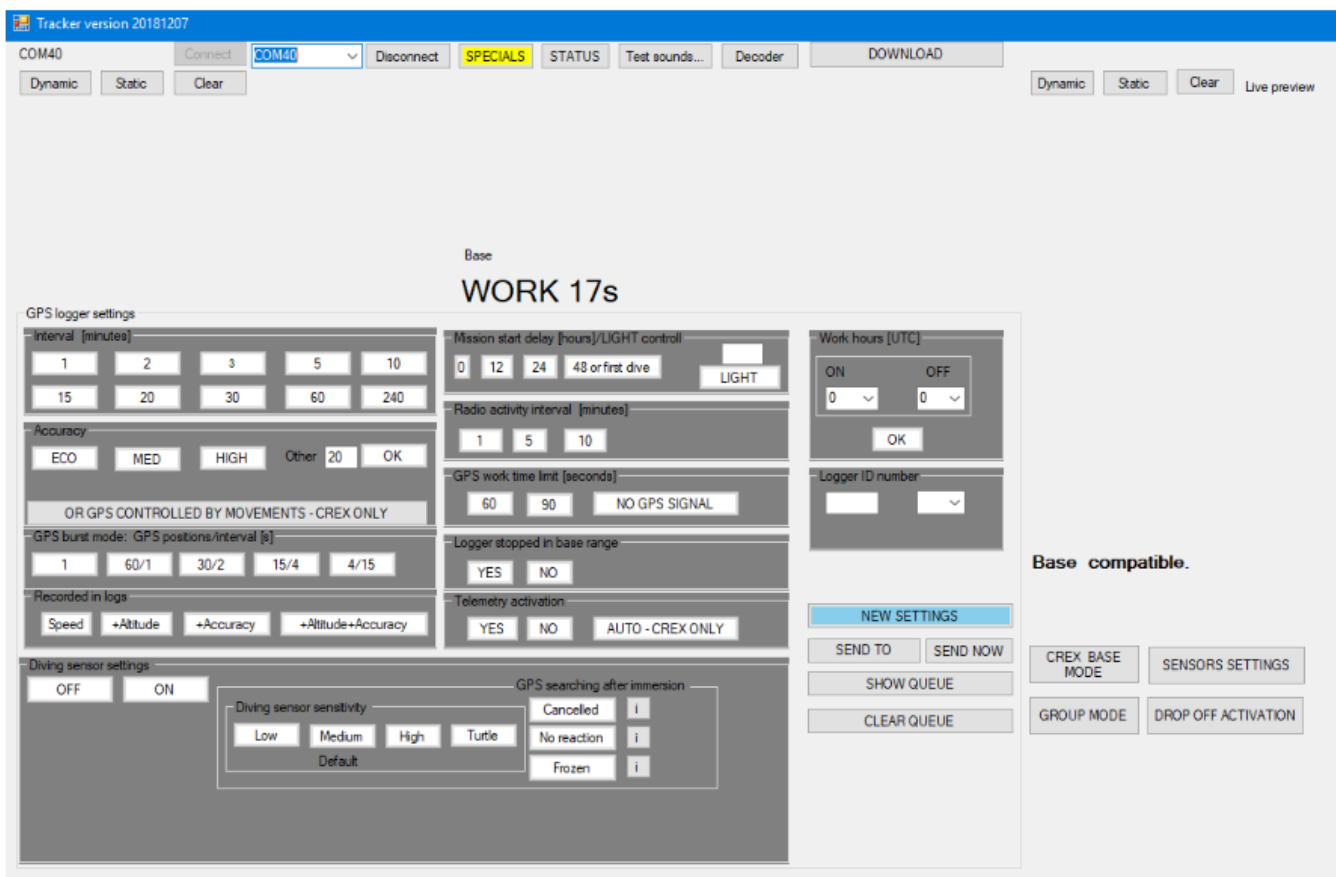


Figure 5. Empty window – base requires change of the settings

To continue work with base station – GROUPS have to be set.

Notice!

If you remove GROUPS (Figure 3) and reconnect base station - you will see empty **LIVE PREVIEW** window again (Figure 5).

Remember!

1. Check version of base station and TRACKER.
2. Check if **EXTENSION CABLE** for base station is plugged properly.
3. Each use of base station requires GROUPS selection.
4. To work in the field GROUPS have to be set.